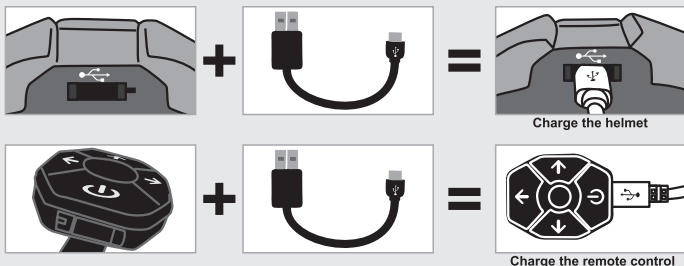


SAFE-TEC

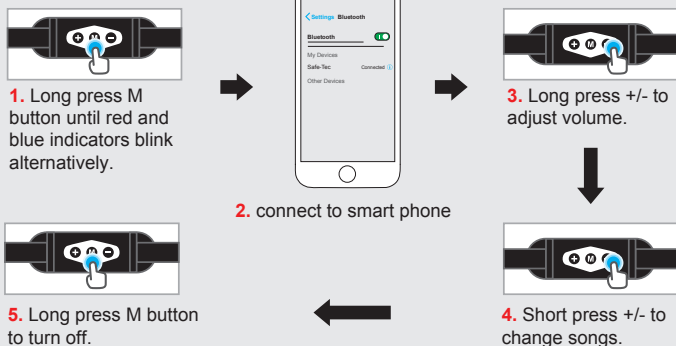
Smart Helmet Operation Instruction-TYR-2/TYR-3

CHARGING



OPERATION

BLUETOOTH FUNCTION



TURN SIGNAL FUNCTION



Match the helmet and control as show above



Turn on: Press Left/Right/Go straight button for 2s to turn on the lights.

Control the lights: Press Left/Right/Go straight button on remote to control, the lights on helmet will react accordingly.

Turn off: Press Power button for 2s.